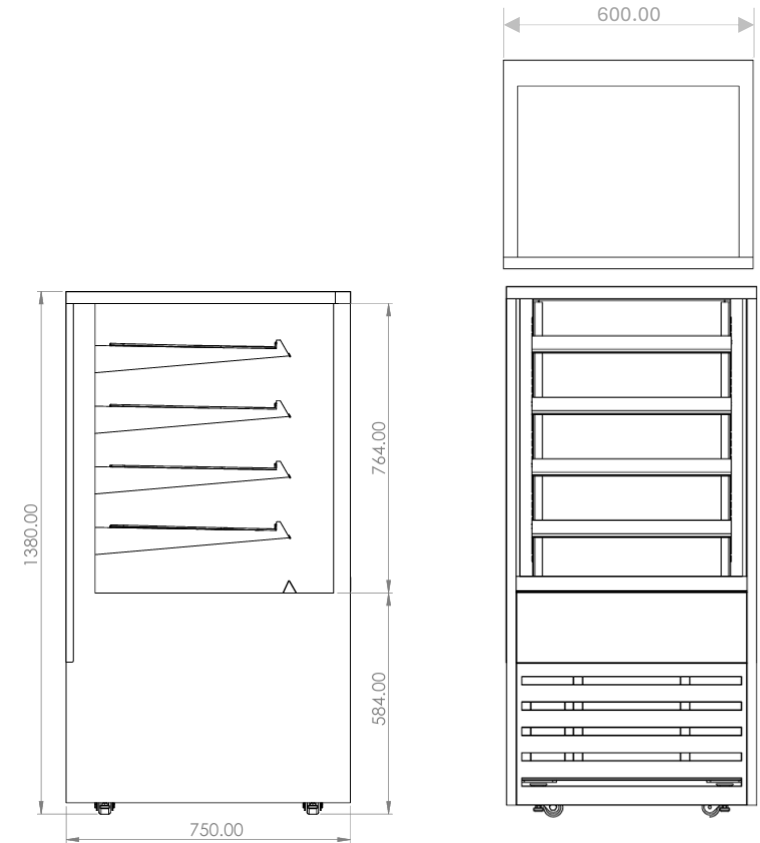


## PRODUCT FEATURES

- Deck forced heating
- Single glazed
- Sliding rear doors (HT6 Hinged)
- Solid front or sliding front doors
- Solid front that hinges at base
- Four adjustable shelves – flat or angled
- Ticket strips on shelves and base
- Under shelf and canopy LED lights



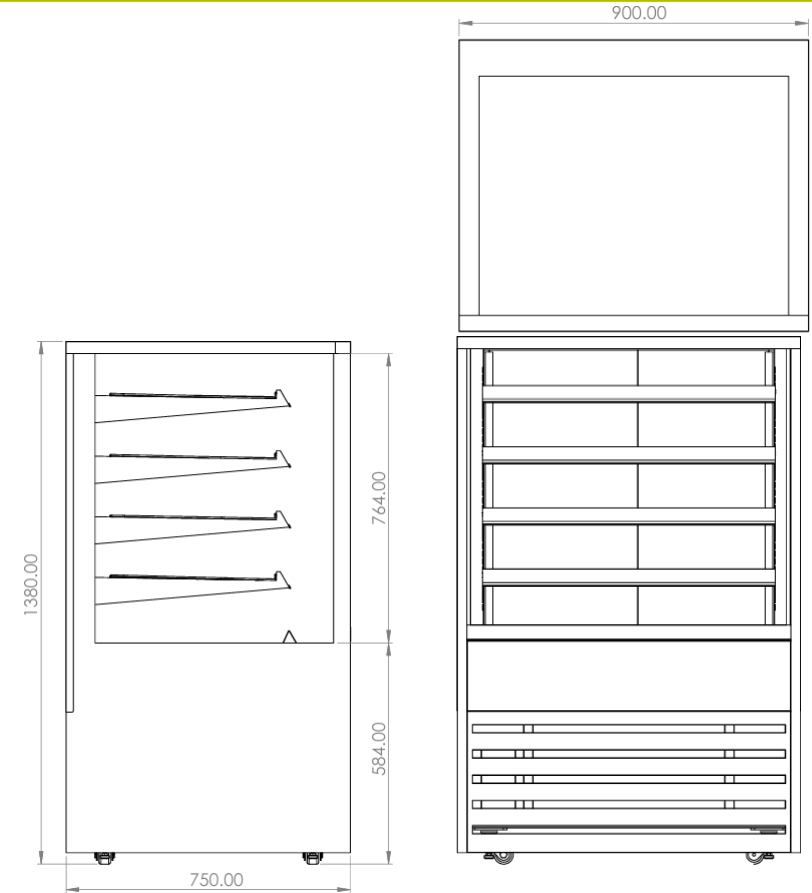
## CABINET DIMENSIONS AND SPECIFICATIONS

MODEL	CABINET				SHELVING	OPERATING TEMP	SHELF W X D	BASE TRAY W X D	TOTAL FOOD	DISPLAY	FREQUENCY	POWER		CONNECTION POWER CORD 2200MM		VOLTAGE	PACKED FOR SHIPPING			
	LENGTH (MM)	DEPTH (MM)	HEIGHT (MM)	WEIGHT KG		DEG C	W X D	W X D	100MM UNITS	M <sup>2</sup>	Hz	KW 230V	AMP	NZ/AUS 3 PIN PLUG 10 AMP	UK 13 AMP 3 PIN PLUG	V	LENGTH (MM)	DEPTH (MM)	HEIGHT (MM)	WEIGHT KG
BTGHT6 BTGHT6-SD	600	750	1380	118	4 + BASE	75-85	490 X 445	540 X 510	100	1.14	50/60	1.24	5.4	3 PIN PLUG 10 AMP	3 PIN PLUG	220-240	700	830	1550	121



## PRODUCT FEATURES

- Deck forced heating
- Single glazed
- Sliding rear doors (HT6 Hinged)
- Solid front or sliding front doors
- Solid front that hinges at base
- Four adjustable shelves – flat or angled
- Ticket strips on shelves and base
- Under shelf and canopy LED lights



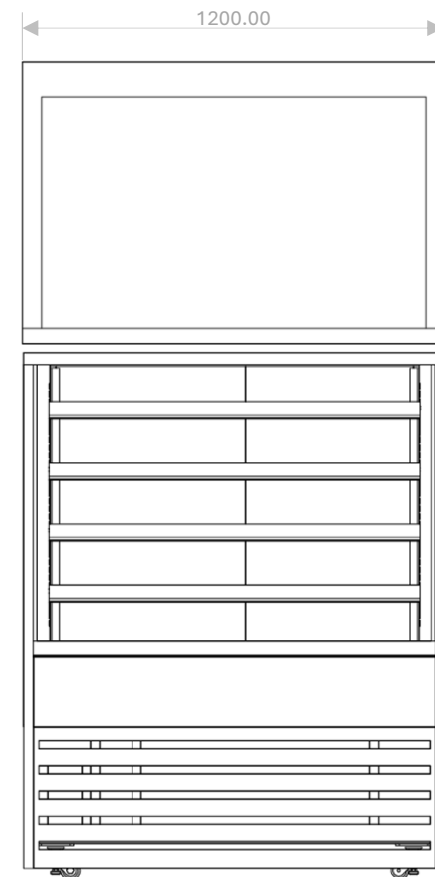
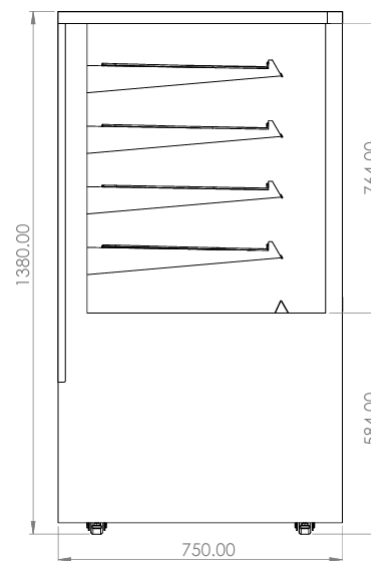
## CABINET DIMENSIONS AND SPECIFICATIONS

MODEL	CABINET				SHELVING	OPERATING TEMP	SHELF		BASE TRAY	TOTAL FOOD	DISPLAY	FREQUENCY	POWER		CONNECTION POWER CORD 2200MM		VOLTAGE	PACKED FOR SHIPPING			
	LENGTH (MM)	DEPTH (MM)	HEIGHT (MM)	WEIGHT (KG)		DEG C	W X D	W X D		100MM UNITS	M <sup>2</sup>	Hz	KW 230V	AMP	NZ/AUS 3 PIN PLUG 10 AMP	UK 13 AMP 3 PIN PLUG	V	LENGTH (MM)	DEPTH (MM)	HEIGHT (MM)	WEIGHT (KG)
BTGHT9 BTGHT9-SD	900	750	1380	150	4 + BASE	75-85	790 X 445	840 X 510		168	1.83	50/60	1.70	7.4	3 PIN PLUG 10 AMP	3 PIN PLUG	220-240	1000	830	1550	155



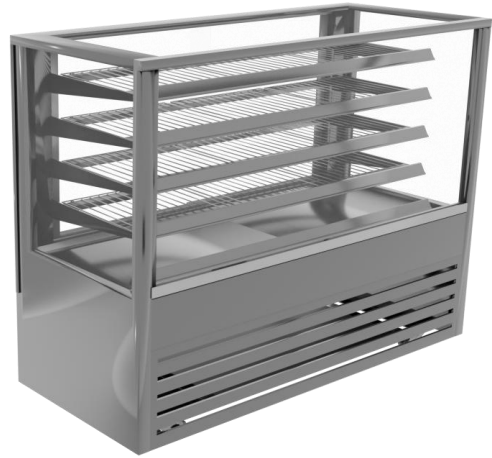
## PRODUCT FEATURES

- Deck forced heating
- Single glazed
- Sliding rear doors (HT6 Hinged)
- Solid front or sliding front doors
- Solid front that hinges at base
- Four adjustable shelves – flat or angled
- Ticket strips on shelves and base
- Under shelf and canopy LED lights



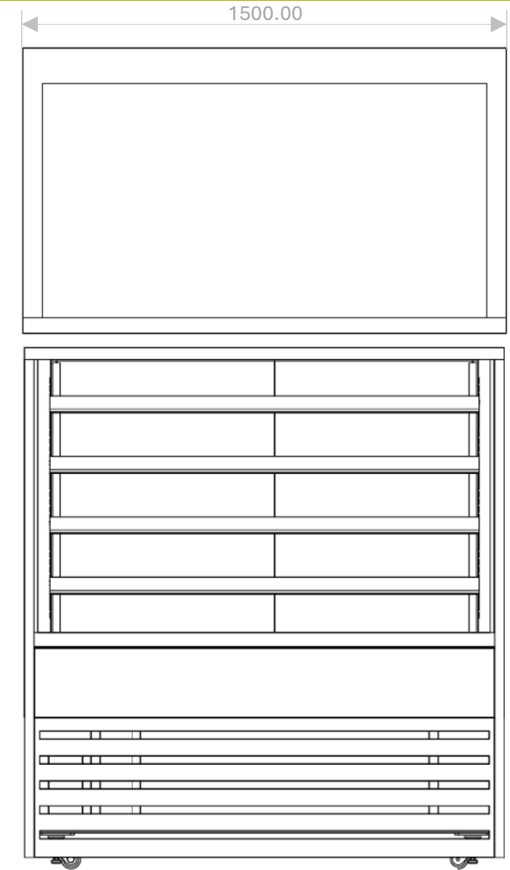
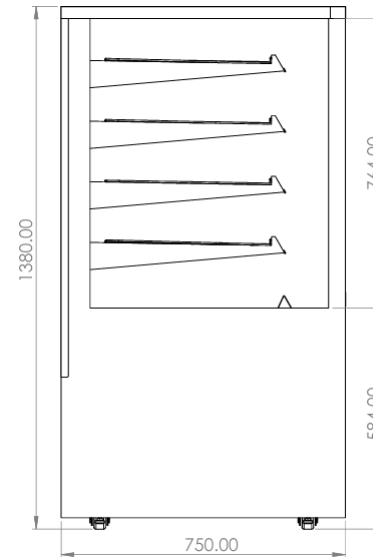
## CABINET DIMENSIONS AND SPECIFICATIONS

MODEL	CABINET				SHELVING	OPERATING TEMP	SHELF	BASE TRAY	TOTAL FOOD	DISPLAY	FREQUENCY	POWER	CONNECTION POWER CORD 2200MM		VOLTAGE	PACKED FOR SHIPPING				
	LENGTH (MM)	DEPTH (MM)	HEIGHT (MM)	WEIGHT KG		DEG C	W X D	W X D	100MM UNITS	M <sup>2</sup>	Hz	KW 230V	AMP	NZ/AUS 15 AMP	UK 13 AMP	V	LENGTH (MM)	DEPTH (MM)	HEIGHT (MM)	WEIGHT KG
BTGHT12 BTGHT12-SD	1200	750	1380	182	4 + BASE	75-85	1090 X 445	1140 X 510	255	2.52	50/60	2.20	9.6	3 PIN PLUG 15 AMP	3 PIN PLUG	220-240	1300	830	1550	185



## PRODUCT FEATURES

- Deck forced heating
- Single glazed
- Sliding rear doors (HT6 Hinged)
- Solid front or sliding front doors
- Solid front that hinges at base
- Four adjustable shelves – flat or angled
- Ticket strips on shelves and base
- Under shelf and canopy LED lights



## CABINET DIMENSIONS AND SPECIFICATIONS

MODEL	CABINET				SHELVING	OPERATING TEMP	SHELF W X D	BASE TRAY W X D	TOTAL FOOD	DISPLAY	FREQUENCY	POWER		CONNECTION POWER CORD 2200MM		VOLTAGE	PACKED FOR SHIPPING			
	LENGTH (MM)	DEPTH (MM)	HEIGHT (MM)	WEIGHT KG		DEG C	W X D	W X D	100MM UNITS	M <sup>2</sup>	Hz	KW 230V	AMP	NZ/AUS 3 PIN PLUG 15 AMP	UK 13 AMP PLUG	V	LENGTH (MM)	DEPTH (MM)	HEIGHT (MM)	WEIGHT KG
BTGHT15 BTGHT15-SD	1500	750	1380	214	4 + BASE	75-85	1390 X 445	1440 X 510	355	3.20	50/60	2.66	11.6	3 PIN PLUG 15 AMP	3 PIN PLUG	220-240	1600	830	1550	222