

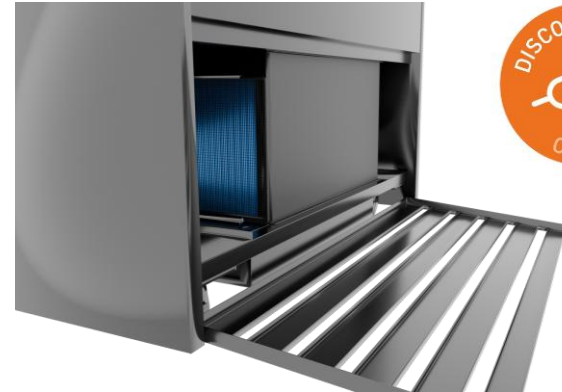


Applicable models:

BTGRF6
BTGRF9
BTGRF12
BTGRF15
BTGRF18
BTGOR6
BTGOR9
BTGOR12

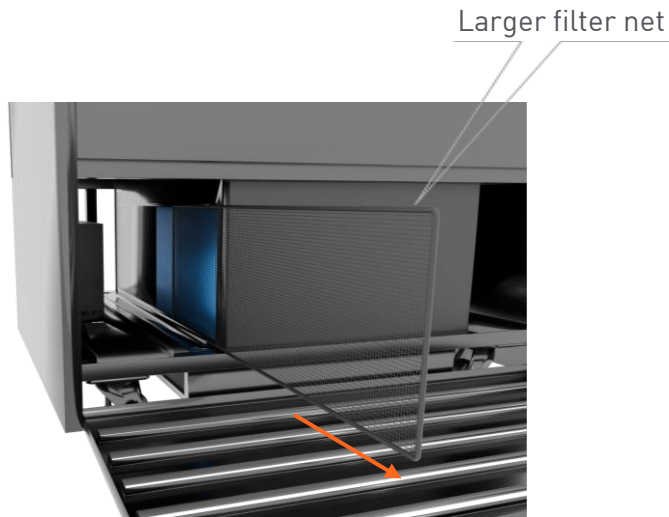


NOTE: There are 2 filter nets to remove and clean



1

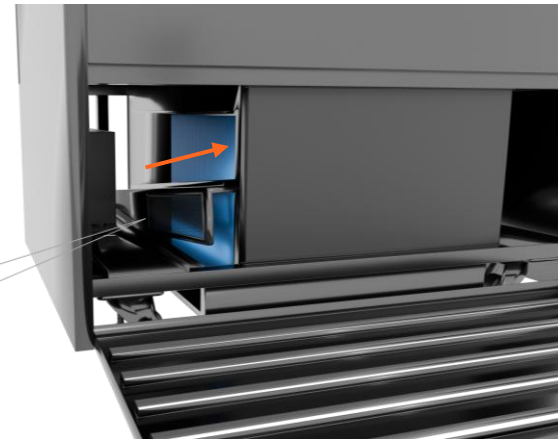
Pull the top of the front grill down to reveal the condenser



2

Remove the larger filter

Slide the filter net out along the face of the condenser

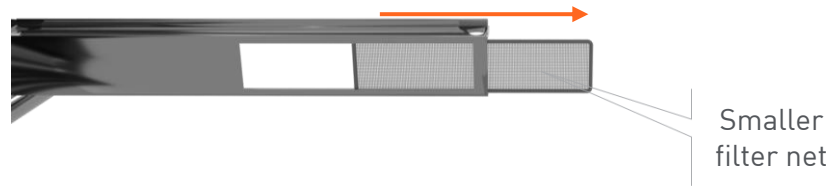


3

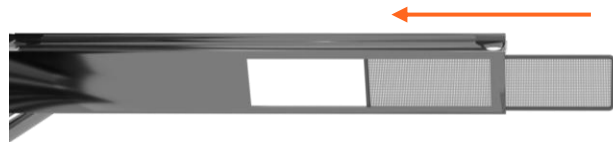
Remove the smaller filter

Lift the angled extrusion out from its position across the bottom of the condenser face

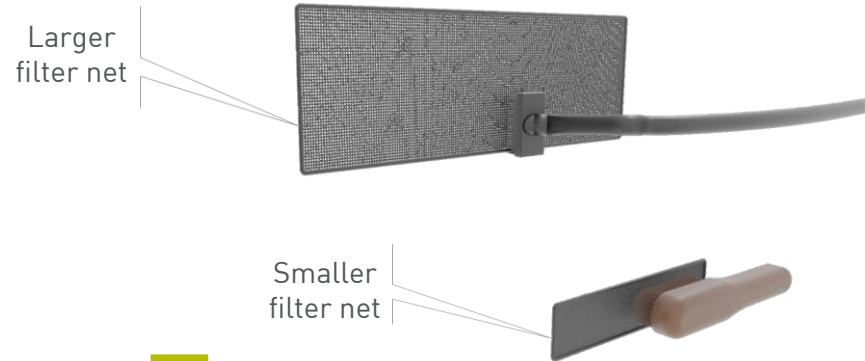




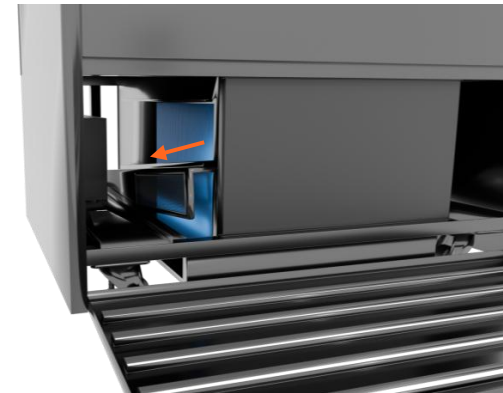
- 4** ■ **Remove the smaller filter**
Slide the filter net out of the angled extrusion that you just removed



- 6** ■ **Reinstall the smaller filter**
Replace the clean smaller filter net into the angled extrusion

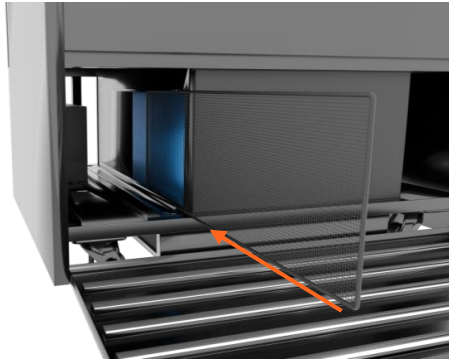


- 5** ■ Clean the dust off both filter nets using either a brush or vacuum

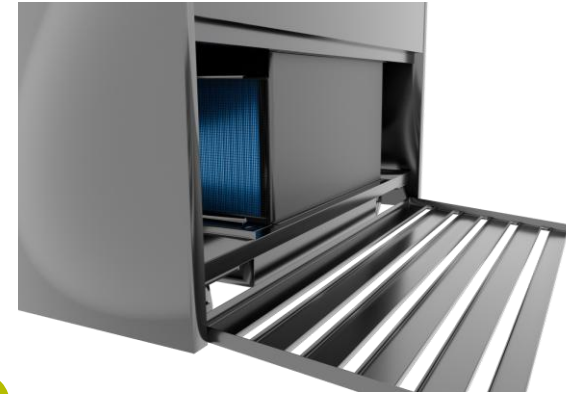


- 7** ■ **Reinstall the smaller filter**
Place the angled extrusion back into the correct position along the bottom of the condenser face





- 8** ■ **Reinstall the larger filter**
Slide the filter net along the condenser face
on top of the angled extrusion



- 9** ■ Close the front grill

NOTE: The larger filter net, angled extrusion and smaller filter net can all be retrieved from the rear also

